



# Westbury Reserve

Westbury Reserve is 70 hectares of eucalypt forest and grassy woodland purchased in 1999 for conservation.

This species list is based on surveys by members of the Central North Field Naturalists Inc. (CNFN Inc.)

Blue Pincushion *Brunonia australis*  
Image: Philip Milner

## CANOPY TREES

|                    |                              |
|--------------------|------------------------------|
| E Black Peppermint | <i>Eucalyptus amygdalina</i> |
| White Gum          | <i>Eucalyptus viminalis</i>  |
| Black or Swamp Gum | <i>Eucalyptus ovata</i>      |

## UNDERSTOREY TREES/ TALL SHRUBS

|                |                                 |
|----------------|---------------------------------|
| Silver Wattle  | <i>Acacia dealbata</i>          |
| Blackwood      | <i>Acacia melanoxylon</i>       |
| Prickly Moses  | <i>Acacia verticillata</i>      |
| Black Sheoak   | <i>Allocasuarina littoralis</i> |
| Silver Banksia | <i>Banksia marginata</i>        |
| Pinkwood       | <i>Beyeria viscosa</i>          |
| Prickly Box    | <i>Bursaria spinosa</i>         |
| Native Cherry  | <i>Exocarpus cupressiformis</i> |
| Cheesewood     | <i>Pittosporum bicolor</i>      |
| Dogwood        | <i>Pomaderris apetala</i>       |

## MEDIUM SHRUBS

|                  |                              |
|------------------|------------------------------|
| Dollybush        | <i>Cassinia aculeata</i>     |
| Native Currant   | <i>Coprosma quadrifida</i>   |
| Tree Violet      | <i>Melycitus dentatus</i>    |
| Trident Bush     | <i>Micrantheum hexandrum</i> |
| Forest Daisybush | <i>Olearia lirata</i>        |
| Dusty Daisybush  | <i>Olearia phlogopappa</i>   |
| Native Pepper    | <i>Tasmannia lanceolata</i>  |

## SMALL SHRUBS

|                    |                                 |
|--------------------|---------------------------------|
| Ant's Delight      | <i>Acrotriche serrulata</i>     |
| Creeping Bossia    | <i>Bossiaea prostrata</i>       |
| Common Heath       | <i>Epacris impressa</i>         |
| Thyme Guineaflower | <i>Hibbertia serpyllifolia?</i> |
| Common Hovea       | <i>Hovea heterophylla</i>       |
| Guitarplant        | <i>Lomatia tinctoria</i>        |
| Dwarf Riceflower   | <i>Pimelea humilis</i>          |

## CLIMBERS

|                    |                              |
|--------------------|------------------------------|
| Green Appleberry   | <i>Billardiera mutabilis</i> |
| Southern Clematis  | <i>Clematis aristata</i>     |
| Blue Love Creeper  | <i>Comesperma volubile</i>   |
| Twining Fringelily | <i>Thysanotus patersonii</i> |

## HERBS & HERB-LIKE PLANTS

|                         |                                 |
|-------------------------|---------------------------------|
| Sheepsburr              | <i>Acaena echinata</i>          |
| Buzzy                   | <i>Acaena novae-zelandiae</i>   |
| A Woodruff              | <i>Asperula</i> sp.             |
| Native Cranberry        | <i>Astelroma humifusa</i>       |
| Blue Pincushion         | <i>Brunonia australis</i> (r)   |
| Houndstongue            | <i>Cynoglossum australe</i>     |
| Kidneyweed              | <i>Dichondra repens</i>         |
| Pale sundew             | <i>Drosera peltata</i>          |
| Tangled Bedstraw        | <i>Galium australe</i>          |
| Trailing Nativeprimrose | <i>Goodenia lanata</i>          |
| Mountain Cranesbill     | <i>Geranium potentillioides</i> |
| Hairy Pennywort         | <i>Hydrocotyle hirta</i>        |
| Bluebottle Daisy        | <i>Lagenophora stipitata</i>    |
| Grassland Woodsorrel    | <i>Oxalis perennans</i>         |
| A Plantain              | <i>Plantago</i> sp.             |
| Small Poranthera        | <i>Poranthera microphylla</i>   |
| Woodland Buttecup       | <i>Ranunculus lappaceus</i>     |
| Hairy Speedwell         | <i>Veronica calycina</i>        |
| Ivy-leaved Violet       | <i>Viola hederacea</i>          |
| Bluebell                | <i>Wahlenbergia</i> sp.         |

## GRASSES & GRAMINOIDS

|                        |                              |
|------------------------|------------------------------|
| Chocolate Lily         | <i>Arthropodium strictum</i> |
| A Wallaby Grass        | <i>Austrodanthonia</i> sp.   |
| Tasman Flaxlily        | <i>Dianella tasmanica</i>    |
| White Flag Iris        | <i>Diplarrena morea</i>      |
| Weeping Grass          | <i>Ehrharta stipoides</i>    |
| A Rush                 | <i>Juncus</i> sp.            |
| Tall Swordsedge        | <i>Lepidosperma elatius</i>  |
| A Swordsedge fine leaf | <i>Lepidosperma</i> sp.      |
| Matrush                | <i>Lomandra longifolia</i>   |
| Silver Tussockgrass    | <i>Poa labillardieri</i>     |
| E Soft Tussockgrass    | <i>Poa mollis</i> ? (r)      |
| Velvet Tussock grass   | <i>Poa rodwayi</i>           |
| Kangaroo Grass         | <i>Themeda triandra</i>      |

## ORCHIDS

|                     |                                 |
|---------------------|---------------------------------|
| Mayfly Orchid       | <i>Acianthus caudatus</i>       |
| Mosquito Orchid     | <i>Acianthus pusillus</i>       |
| A Finger Orchid     | <i>Caladenia</i> sp.            |
| E Bird Orchid       | <i>Chiloglottis triceratops</i> |
| Slaty Helmet Orchid | <i>Corybas incurvus</i>         |
| Gnat Orchid         | <i>Cyrtostylis reniformis</i>   |
| An Onion Orchid     | <i>Microtis</i> sp.             |
| A Leek Orchid       | <i>Prasophyllum</i> sp.         |
| Nodding Greenhood   | <i>Pterostylis nutans</i>       |
| Maroonhood          | <i>Pterostylis pedunculata</i>  |
| A Sun Orchid        | <i>Thelymitra</i> sp.           |

## FERNS

|            |                             |
|------------|-----------------------------|
| Maidenhair | <i>Adiantum aethiopicum</i> |
| Bracken    | <i>Pteridium esculentum</i> |

## ENVIRONMENTAL WEEDS

|               |                             |
|---------------|-----------------------------|
| Spanish Heath | <i>Erica lusitanica</i> (i) |
| Blackberry    | <i>Rubus fruticosus</i> (i) |
| Gorse         | <i>Ulex europaeus</i> (i)   |

## FUNGI INCLUDING LICHENS

|                            |
|----------------------------|
| <i>Trametes versicolor</i> |
| <i>Cladia</i> sp.          |
| <i>Cladina confusa</i>     |
| <i>Menegazzia</i> sp.      |
| <i>Usnea</i> sp.           |

## SLIME MOULDS

|                         |
|-------------------------|
| <i>Trichia botrytis</i> |
|-------------------------|



Tasmanian Masked Owl at Westbury Reserve, 20 February 2007 (Image: S. Lloyd)

## BIRDS

Australian Shelduck  
Brown Goshawk  
**ES** Grey Goshawk (e)  
**ES** Wedge-tailed Eagle (e, EN)  
**ES** Masked Owl (e, VU)  
Common Bronzewing  
Brush Bronzewing  
Yellow-tailed Black-Cockatoo  
Sulphur-crested Cockatoo  
**E** Green Rosella  
Blue-winged Parrot  
Shining Bronze-cuckoo  
Pallid Cuckoo  
Fan-tailed Cuckoo  
Laughing Kookaburra (i)  
Superb Fairy-wren  
Striated Pardalote  
Spotted Pardalote  
**E** Tasmanian Scrubwren  
Brown Thornbill  
Yellow-rumped Thornbill  
**E** Yellow Wattlebird  
**E** Strong-billed Honeyeater  
**E** Black-headed Honeyeater  
Eastern Spinebill  
**E** Dusky Robin  
Scarlet Robin  
Golden Whistler  
Grey Shrike-thrush  
Satin Flycatcher  
Grey Fantail  
Black-faced Cuckoo-shrike  
Dusky Woodswallow  
Grey Currawong  
Forest Raven  
Silvereye  
Common Blackbird (i)  
Common Starling (i)

## MARSUPIALS

Bennett's Wallaby  
Pademelon  
Brush-tail Possum  
Ring-tail Possum

## MAMMALS

European Hare (i)  
Fallow deer (i)

## INVERTEBRATES

Moth *Capusa cuculoides*  
Grasshopper  
Collembola (tiny white)  
Canary worm *Fletcheria sugdeni*  
snail *Oxychilus cellarius* (i)

## FROGS

Growling grass frog *Litoria raniformis* (VU)

r = rare; e = endangered TSPA 1995

EN = endangered

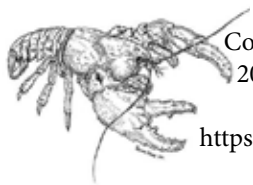
VU = vulnerable EPBC Act 1999

**E** before the name = endemic (found only in Tasmania)

**ES** = endemic subspecies

i = introduced

? = to be confirmed



Compiled by Sarah Lloyd OAM  
206 Denmans Road, Birralee.  
September 2020  
<https://www.disjunctnaturalists.com>