

Perichaena vermicularis (Schwein.) Rostaf.

0263

Date 22 June 2014 Black Sugarloaf, Birralee (big tree track)

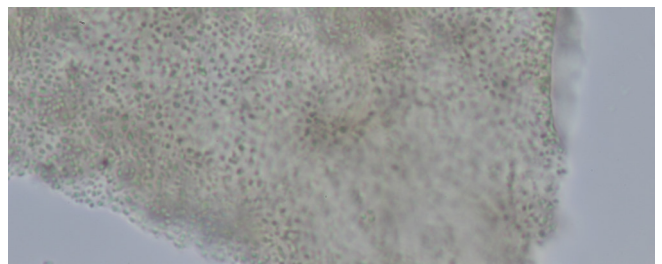
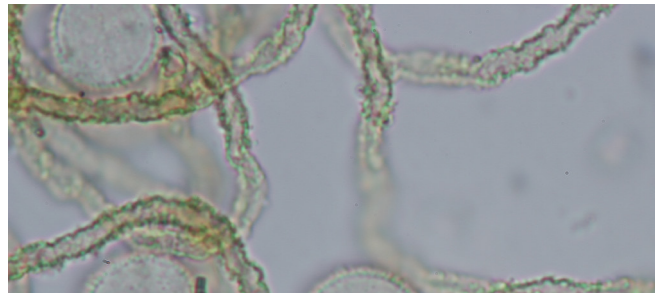
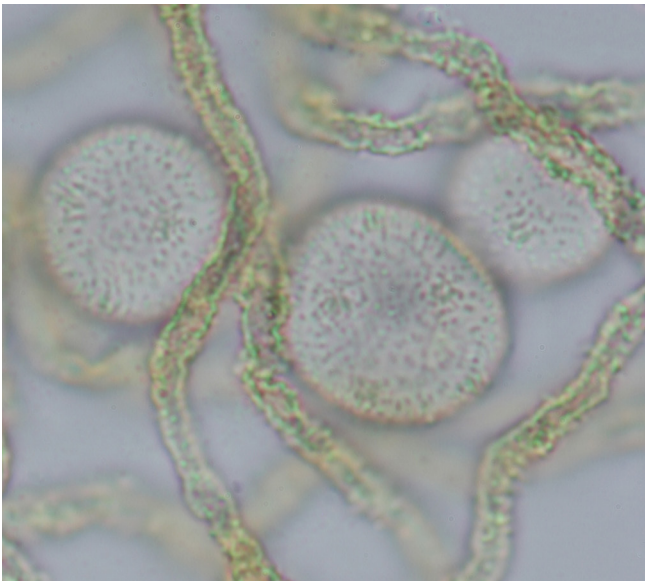
Habitat: Closed wet Eucalypt forest.

Substrate: Dead *Clematis aristata* upslope from track.

Description: Small groups of vermiform plasmodiocarps, light and dark brown, 2.1 mm long x 0.3 mm diameter.

Hypothallus contiguous under group, shiny. **Peridium** persistent in most plasmodiocarps, very finely granular, finely dotted (papillate or punctate) by transmitted light, dehiscence irregular. **Capillitium** tubular, mustard yellow with minute warts or spines 3 µm diameter. **Spores** yellow in mass, pale yellow by transmitted light, minutely warted, 10–15 µm.

Notes: Other species found on dead *Clematis aristata* included *Badhamia panicea*, *Dictydiaethalium plumbeum*, *Physarum pusillum*, *Didymium nigripes*, *D. applanatum*, *Dianema depressum*.



Perichaena vermicularis (Schwein.) Rostaf.

MEL 773 0282

Date 4 Oct. 2013 Black Sugarloaf, Birralee (big tree track)

Habitat: Closed wet Eucalypt forest.

Substrate: Dead *Clematis aristata*.

Description: Small group of vermiform plasmodiocarps, mustard brown, 2.1 mm long x 0.3 mm diameter.

Peridium: Same as above but much lighter in colour.

Note: This species is yet to appear on a substrate other than dead *Clematis aristata*.

