

Date: 15 June 2014. Black Sugarloaf, Birralee (big tree track).

Habitat: Closed wet eucalypt forest

Substrate: Leaves (*Acacia melanoxylon* and *Pomaderris apetala*) and twig on the ground. **Description:** Stalked sporangia 1.1–1.5 high. **Sporotheca** globose 0.3–0.5 mm in diameter. **Stalk** dark black/brown, ridged, subulate i.e. wider at base. Yellow waxy globules on stalk, possibly because of wet conditions while the sporangia were developing. (Conditions were very wet but developing sporangia were covered.) **Hypothallus** discoid, thick and black in center; transparent and reddish brown at margins. **Peridium** iridescent with darker spots but overlain with oily/waxy patches of either dark yellow globules or lighter yellow circular patches. **Columella** reaches to approximately one third of sporotheca. **Capillitium** brownish yellow, with reddish brown swellings. **Spores** brown in mass, lighter by transmitted light with dark reticulate pattern, 11–12 μm .

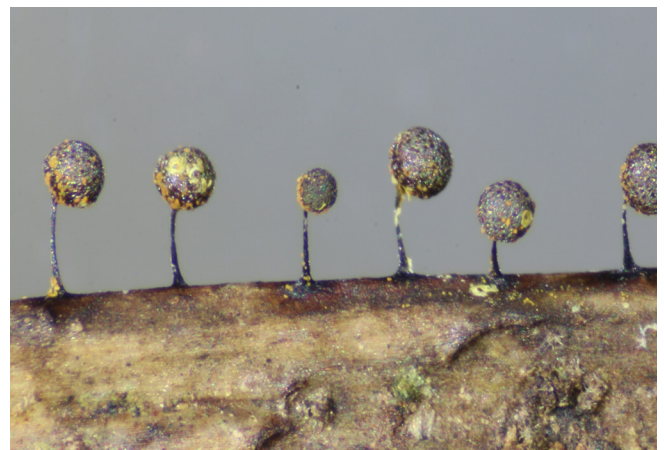
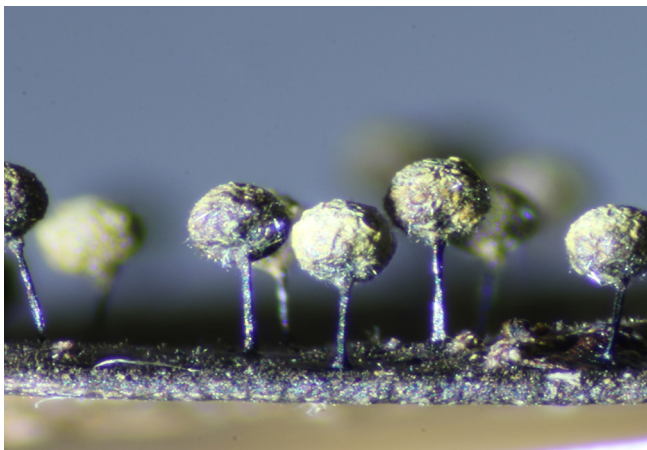
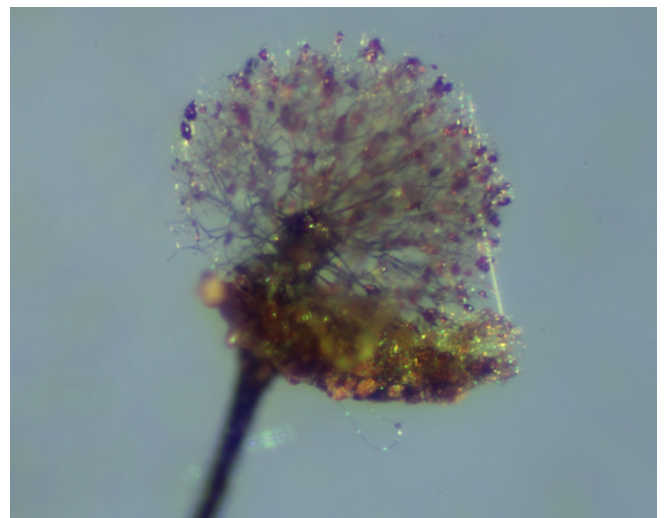
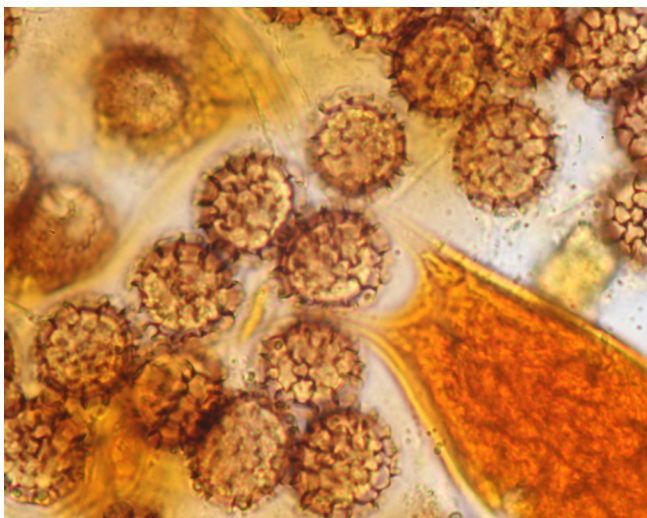
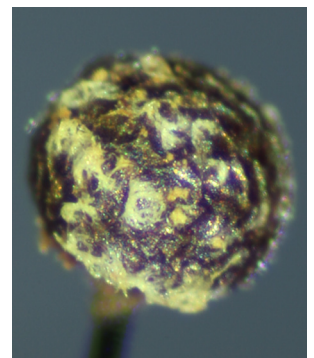
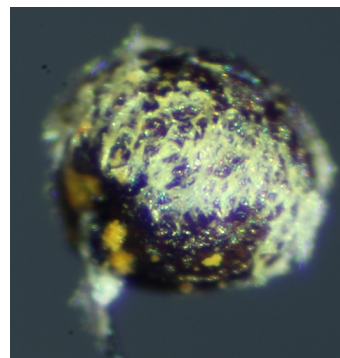
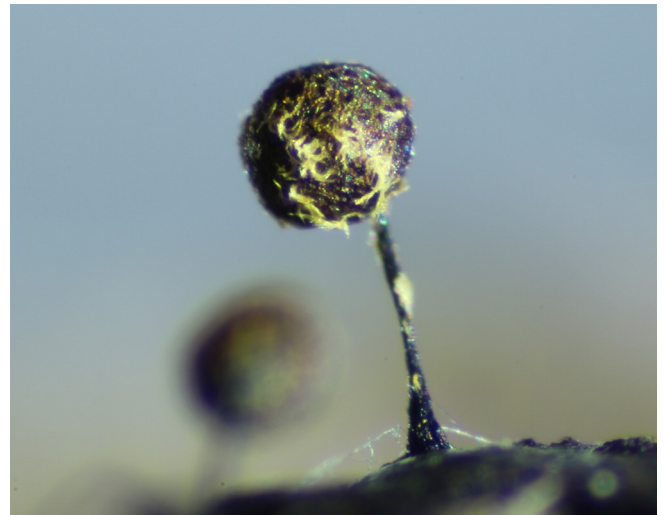
Plasmodium yellow.

Notes: This species, hitherto known only from the type locality in Java, has been collected several times at Black Sugarloaf: 18 Aug 2012 (SJL34); July 2013 (#0726); 3 Oct 2013; 4 June 2014 (#0119); 18 June 2014 (#0124).

On 16 June 2016 an extensive colony appeared on leaf litter on 'big tree log'. (Collection #0607 has been lodged at MEL.) A grainy yellow plasmodium was seen in association with the developing sporangia.

Immature sporangia were collected from Liffey, June 2014.

Identified by G. Moreno.



E. reticulospora 16 June 2016 #0607.

Elaeomyxa reticulospora 16 June 2016 #0607.