

Date Aug. 2011. Black Sugarloaf, Birrale (big tree track).

Habitat: Closed wet Eucalypt forest.

Substrate bryophytes on log.

Description Extensive colony of stalked sporangia 2.5–5 mm high. **Sporotheca** egg-shaped to globose, 1–1.5 mm long x 0.7–1.2 mm diameter; dehiscence in upper part leaving cup.

Stalk reddish brown, darker at apex in some collections, some fused, flattened and twisted, longitudinally striate, 1.5–3.5 mm long. **Hypothallus** inconspicuous. **Peridium** in two parts: upper part membranous, fragile, beige; lower part shiny, red brown. **Capillitium** tuft of threads mainly arising from the edge of the cup; threads taper at apex, shiny brown, 0.9–1.2 mm long; swellings can be seen with oil immersion lens. **Spores** ochraceous in mass, almost hyaline in transmitted light with complete or broken reticulate pattern, 6–8 μm .

Notes: This species has appeared numerous times on large old bryophyte-covered eucalypt logs or stumps:

2010 - photographed but not collected on stump near house.

Aug. 2011 #0210; 13 Sept. 2012 #0213 MEL91; 29 Sept.

2012 #0214; 19 Jan. 2013 #0715, 7 Nov. 2013 #0214; 16

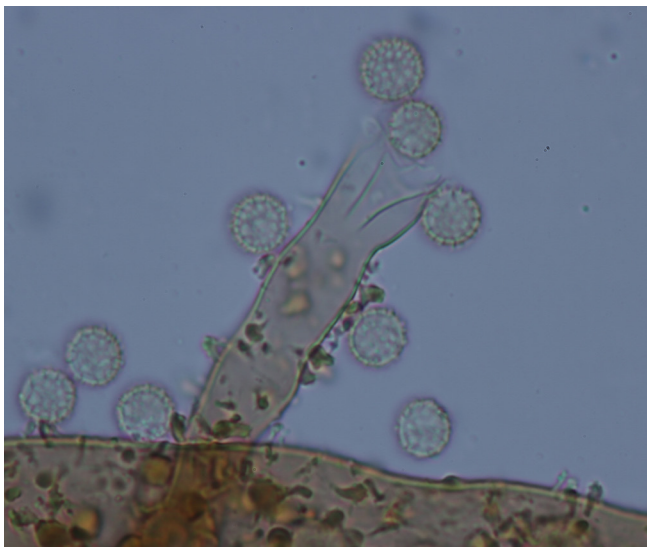
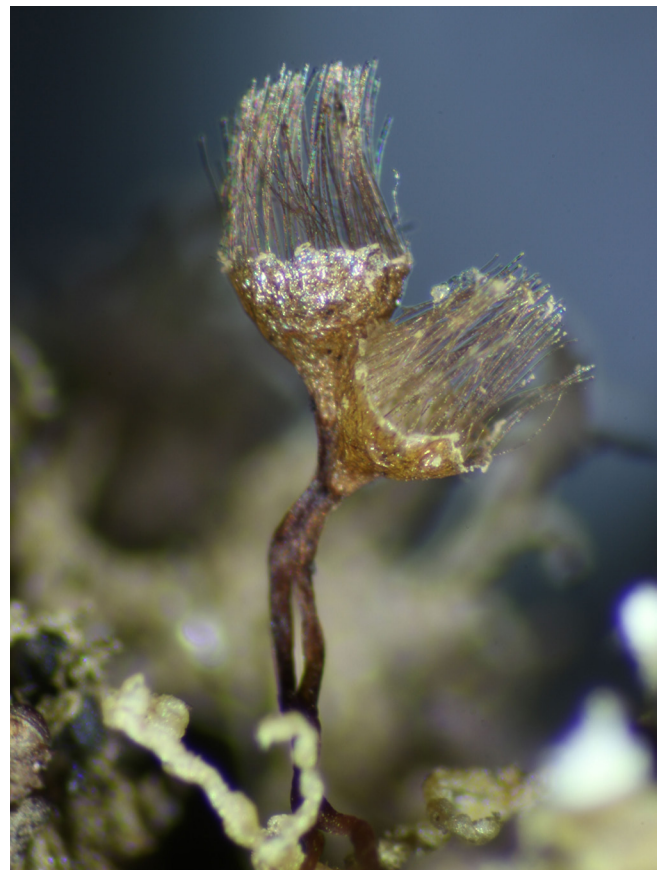
Feb. 2014 #0716; 3 Oct. 2015 #0717.

2016 - appeared on four large logs 50–100 meters apart:

8 July 2016 MEL646 (photo below); July 29 2016 did not mature before we left for New Zealand and was not collected.

Aug. 2016 appeared on large log near the house, affected by rain and was not collected.

14 Sept. 2016 upper gully bryophyte-covered log #0761.



17 Aug. 2010 developing *A. lloydiae*.

8 July 2016 mature *A. lloydiae*.